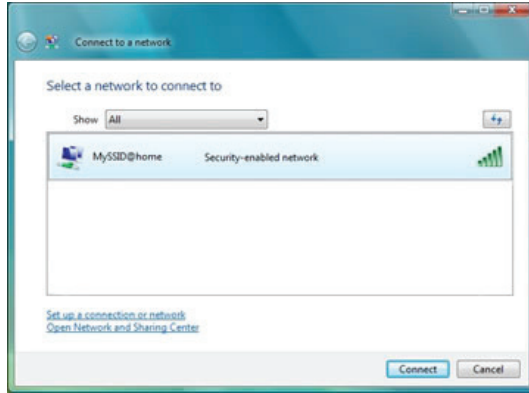


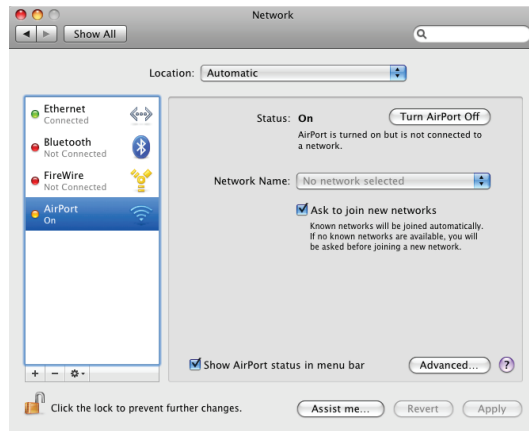
## Microsoft Windows Vista / Windows 7

- 1 Go to **Start Menu > Control Panel > Network and Sharing Center**. Select **Connect to a network** in the left-hand column, and the **Network Connection** window will appear.
- 2 Select the **MySSID@home** in the list of available wireless networks, and then click **Connect** at the bottom right-hand corner of the window.
- 3 In the field **Security key or passphrase**, enter the Encryption Key value that is previously entered when configuring the Surf AP unit. Then, click **Connect** to establish connection.
- 4 Upon successful connection, check the options **Save this network** and **Start this connection automatically**. This allows your computer to connect to Surf AP automatically when turned on. Click **Close** to end the setup.



## Apple Mac OS X

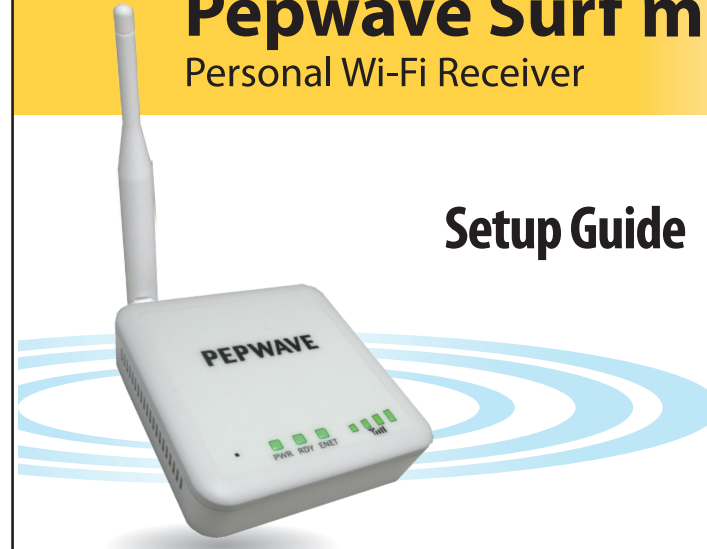
- 1 From the menu, select **System Preferences** and then click on the **Network** icon.
- 2 For the field **Location**, select **Automatic**. Then, select **AirPort** in the left-hand column. If AirPort is not already turned on, click on button **Turn AirPort On** to turn it on.
- 3 In the field **Network Name**, select **MySSID@home**. A dialog box will then prompt for the Password. In the **Password** field, enter the Encryption Key value that is previously entered when configuring the Surf AP unit. Click **OK** to establish connection.
- 4 Upon successful connection, click the **Apply** button at the bottom right-hand corner of the dialog box to end the setup.



# Pepwave Surf mini

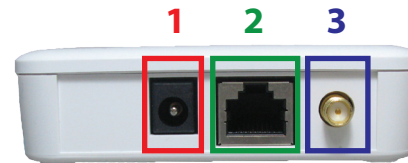
## Personal Wi-Fi Receiver

## Setup Guide



**PEPWAVE**  
Broadband Possibilities

## Getting Started



### 1 Power Adapter

Plug the power adapter into the Surf mini's DC port, and then connect it to the nearest power outlet.

### 2 Ethernet

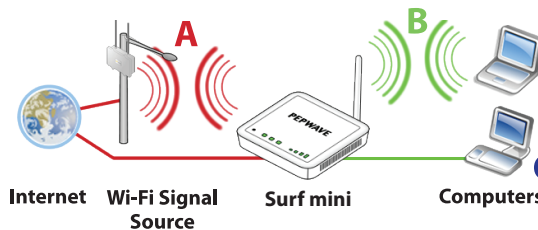
Insert one end of the Ethernet cable into the Surf mini's LAN port, and the other end into your computer's Ethernet Port.

### 3 Antenna

Connect the antenna to the Surf mini unit by screwing it clockwise into the antenna jack.

## Configurations

The figure shown below is a typical network setup for Surf mini. Your network setup may vary. Follow the steps below to configure your device properly.



**A Wi-Fi Settings Configuration**  
Setup your Surf mini to receive Wi-Fi signal

**B Integrated Home AP Configuration**  
Setup your Surf mini to broadcast a local Wi-Fi Signal

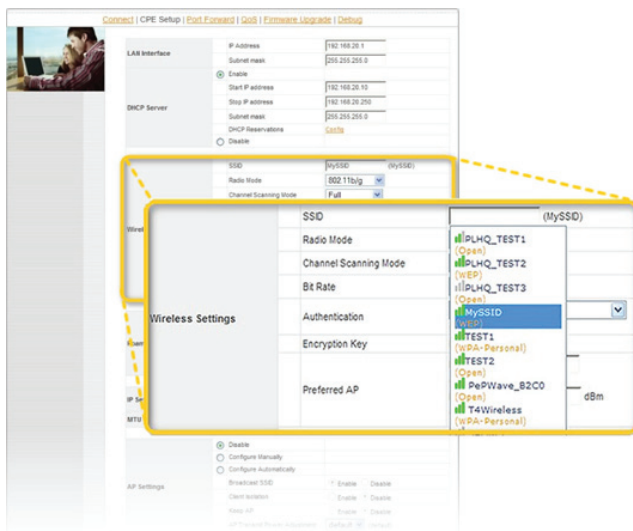
**C Connect to Surf mini using Wi-Fi**  
Setup your computer to receive Surf mini's Wi-Fi Signal

# A Wi-Fi Settings Configuration

- 1 Open a web browser and enter the URL: `http://192.168.20.1`  
Upon successful connection, the **Welcome Screen** will be displayed.



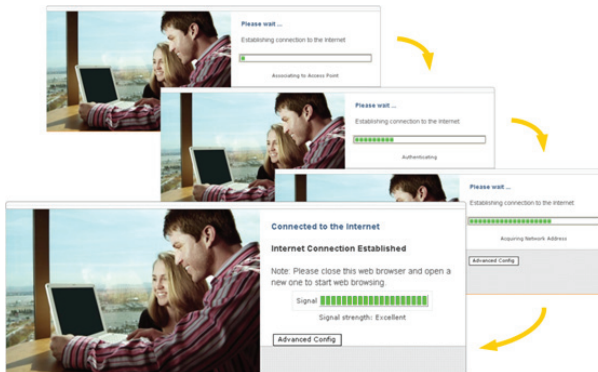
- 2 Click on **Advanced Config** button. In the section **Wireless Settings**, edit the SSID field from the default value of **MySSID** to the SSID specified by the Wireless Internet Service Provider. Otherwise, you may change this field to a blank value, and select a specified SSID from the list of SSIDs shown along with the corresponding encryption and signal strength.



- 3 In the section **Wireless Settings**, from the **Authentication** drop-down menu, select a value that matches the authentication setting value specified by the Wi-Fi Internet Service Provider. Then, if applicable, enter the **Encryption Key** value provided.

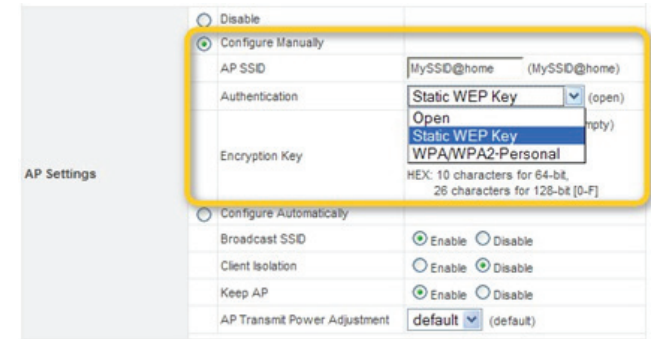
- 4 Click **Save** at the bottom right-hand corner of the page **CPE Setup**. Upon successful connection, go to the page **Connect**, and the **Connection Screen** indicating signal strength level will be displayed.

- 5 Test the Wi-Fi Connection. At this point, all of the LEDs on the Surf unit should be lit up and in green:  
Power – **Solid Green**  
Status – **Solid / Flashing Green**  
LAN – **Solid / Flashing Green**  
Wi-Fi – **Solid / Flashing Green**  
Signal Bars – The number of lit signal bars depends on the strength of the received signal.



# B Integrated Home AP Configuration

- 1 Upon successful connection to the Internet, click on **Advanced Config** button. In the section **AP Settings**, select **Configure Manually**.
- 2 In the **AP SSID** field, enter a value by which the home Wi-Fi network is to be identified. For illustrative purposes, the default AP SSID value **MySSID@home** will be used throughout this guide.



- 3 From the **Authentication** drop-down menu, select **Static WEP Key** or **WPA/WPA2-Personal**.
- 4 In the **Encryption Key** field, enter at least 5 characters for **Static WEP Key** authentication or at least 8 characters for **WPA/WPA2-Personal** authentication.
- 5 Click **Save** button at the bottom of the page. You can now disconnect the Ethernet cable from the host PC.

# C Wi-Fi Enabled Host PC Configuration

## Microsoft Windows XP

- 1 Go to **Start Menu > Control Panel > Network Connections**. Right click on the **Wireless Network Connection** icon, and select **View Available Wireless Networks**. The **Wireless Network Connection** window will appear.
- 2 Select the **MySSID@home** in the list of available wireless networks.
- 3 Click **Connect** button in the **Wireless Network Connection** window. A dialog box will then prompt for the **Network Key**.
- 4 In the fields **Network Key** and **Confirm Key**, enter the Encryption Key value that is previously entered when configuring the Surf AP unit. Then, click **Connect** at the bottom right-hand corner to establish connection.

